

# MONTHLY MEMBERSHIP PROGRESS REPORT

District 322 B2

Results as of: 5/31/2024

GMT:

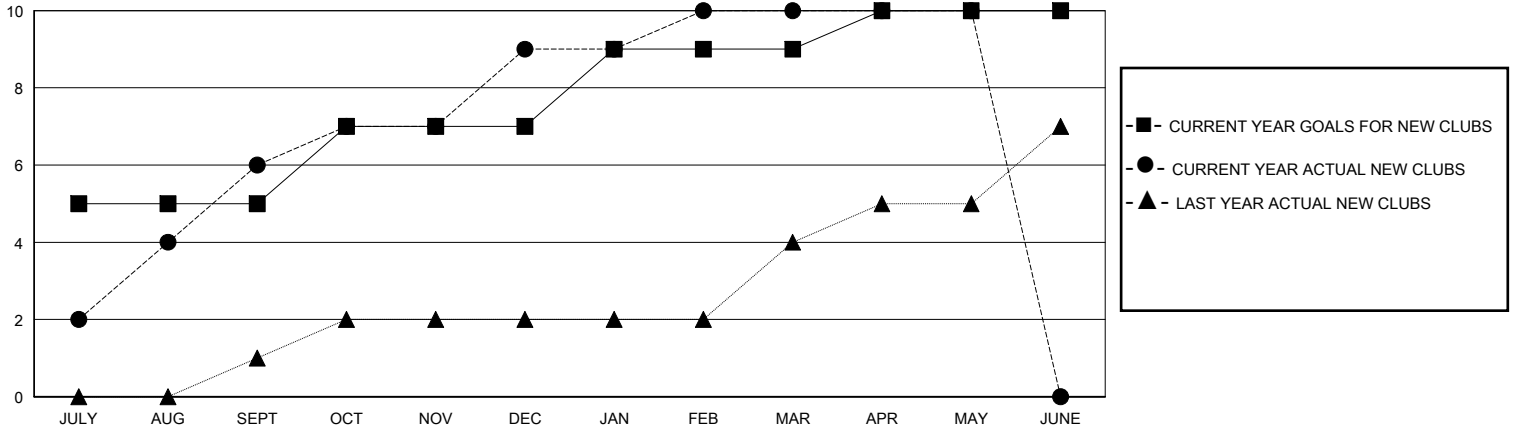
LOCATION INDIA

GMT CA

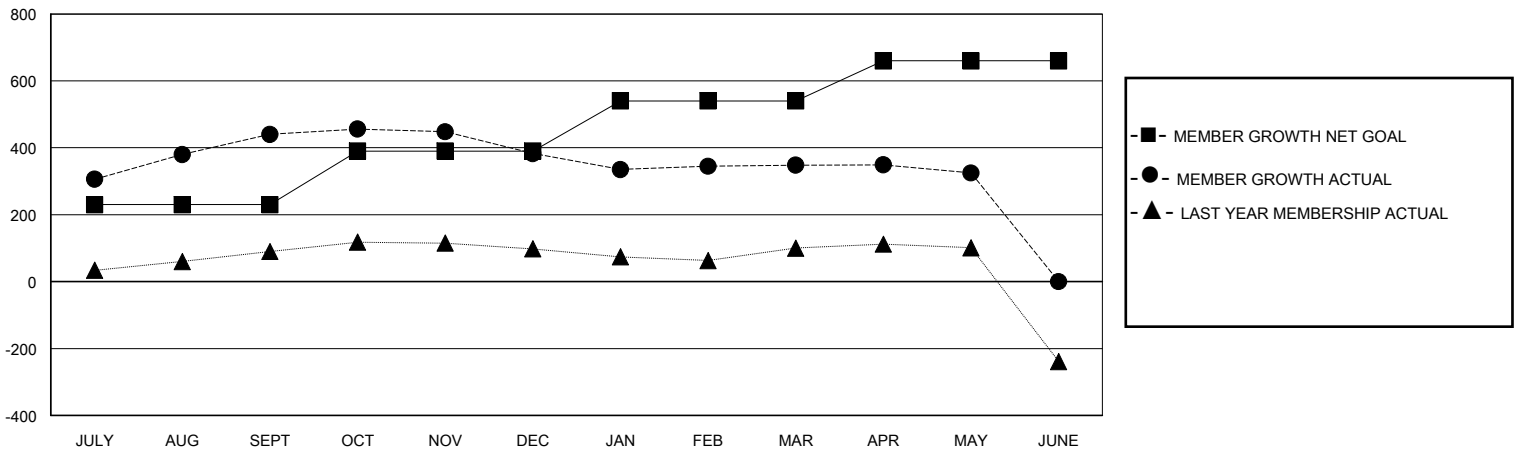
Clubs			
RESULTS FOR 2023-2024			
QUARTER	NEW CLUB GOAL	NEW CLUBS	DROPPED CLUBS
JULY/AUG/SEPT	5	6	1
OCT/NOV/DEC	2	3	2
JAN/FEB/MAR	2	1	2
APR/MAY/JUNE	1	0	0

Members			
RESULTS FOR 2023-2024			
QUARTER	MEMBER GROWTH NET GOAL	MEMBER GROWTH ACTUAL	DROPPED MEMBERS ACTUAL (including transfers)
JULY/AUG/SEPT	230	508	59
OCT/NOV/DEC	160	98	154
JAN/FEB/MAR	150	107	88
APR/MAY/JUNE	120	28	40

GOALS AND ACTUAL NEW CLUBS CUMULATIVE



GOALS AND ACTUAL MEMBERS CUMULATIVE



DROPPED CLUBS: 5	65 CLUBS OF 86 ADDED 1 OR MORE NEW MEMBERS	<b>GENDER DISTRIBUTION</b> MALE 2,179 (70.09%) FEMALE 930 (29.91%)
<b>DROPPED MEMBERS</b> DECEASED 12 CLUB CANCELLED 97 OTHER 232 TOTAL 341	<a href="#">CLICK HERE FOR CUMULATIVE MEMBERSHIP DATA</a>	TOTAL FAMILY UNIT MEMBERS 1,418 FAMILY MEMBERS PAYING HALF DUES 852